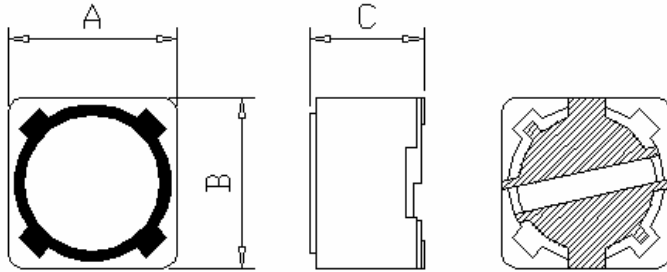
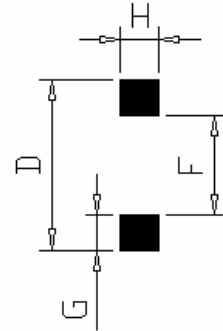


1. SHAPE AND DIMENSION(UNIT:mm)

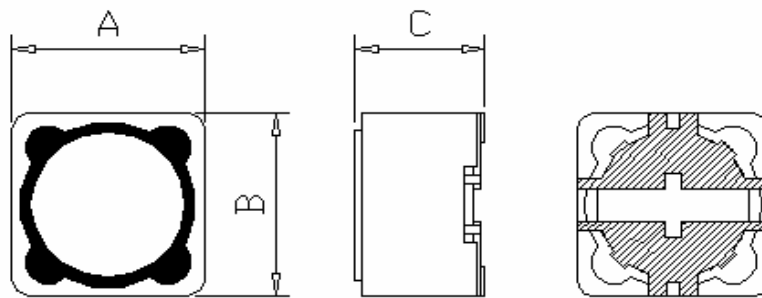
CRGB73/CRGB74



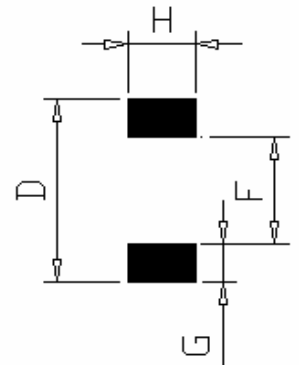
LAND PATTERNS



CRGB62/64/124/125/126/127



LAND PATTERNS



PART NO.	A	B	C	D	F	G	H
CRGB62	6.2	6.2	3.0MAX	7.4	4.6	1.4	1.9
CRGB64	6.2	6.2	5.0MAX	7.4	4.6	1.4	1.9
CRGB73	7.3±0.2	7.3±0.2	3.2±0.2	8.0	4.8	1.6	2.2
CRGB74	7.3±0.2	7.3±0.2	4.5MAX	8.0	4.8	1.6	2.2
CRGB124	12 ±0.3	12 ±0.3	5.0MAX	12.8	7.0	2.9	5.4
CRGB125	12 ±0.3	12 ±0.3	6.0MAX	12.8	7.0	2.9	5.4
CRGB126	12 ±0.3	12 ±0.3	7.0MAX	12.8	7.0	2.9	5.4
CRGB127	12 ±0.3	12 ±0.3	8.0MAX	12.8	7.0	2.9	5.4

可立德實業有限公司

CLIDER ENTERPRISE CO., LTD.

SPECIFICATIONS:

PART NO.	L	RDC (OHM MAX)		IDC (A MAX)	
	(uH)	CRGB62	CRGB64	CRGB62	CRGB64
100	10	0.17	0.12	1.28	1.35
120	12	0.18	0.13	1.19	1.22
150	15	0.28	0.18	0.97	1.11
180	18	0.30	0.24	0.94	1.02
220	22	0.38	0.27	0.71	0.91
270	27	0.43	0.30	0.64	0.82
330	33	0.48	0.33	0.59	0.74
390	39	0.69	0.37	0.54	0.69
470	47	0.71	0.52	0.52	0.62
560	56	0.85	0.56	0.49	0.58
680	68	1.21	0.63	0.41	0.51
820	82	1.42	0.71	0.39	0.46
101	100	1.50	1.03	0.30	0.42
121	120	2.10	1.15		0.38
151	150		1.68		0.35
181	180		1.87		0.32
221	220		2.08		0.29
271	270		2.37		0.26
331	330		2.67		0.23
391	390		2.94		0.22
471	470		3.93		0.20
561	560		5.43		0.18
681	680		7.32		0.17
821	820		8.24		0.15
102	1000		9.26		0.14

◆ TOLERANCE OF INDUCTANCE

L : 10~1000uH±20% (M).

◆ The operating temperature range is -25°C to +85°C.

◆ IDC : The current of inductance drops 10%.



SMD POWER INDUCTOR(CRGB)

SPECIFICATIONS:

P/N	L (uH)	TEST FREQ KHz	RDC (OHM MAX)				IDC (A MAX)			
			CRGB73	CRGB74	CRGB125	CRGB127	CRGB73	CRGB74	CRGB125	CRGB127
1R2	1.2	100				0.0070				9.80
2R4	2.4	100				0.0115				8.00
3R5	3.5	100				0.0135				7.50
4R7	4.7	100				0.0158				6.80
6R1	6.1	100				0.0176				6.60
7R6	7.6	100				0.0200				5.90
100	10	1	72m	0.05	0.025	0.0216	1.68	1.84	4.00	5.40
120	12	1	98m	0.06	0.027	0.0243	1.52	1.71	3.50	4.90
150	15	1	0.13	0.08	0.030	0.0270	1.33	1.47	3.30	4.50
180	18	1	0.14	0.09	0.034	0.0392	1.20	1.31	3.00	3.90
220	22	1	0.19	0.11	0.036	0.0432	1.07	1.23	2.80	3.60
270	27	1	0.21	0.15	0.051	0.0459	0.96	1.12	2.30	3.40
330	33	1	0.24	0.17	0.057	0.0648	0.91	0.96	2.10	3.00
390	39	1	0.32	0.23	0.068	0.0729	0.77	0.91	2.00	2.75
470	47	1	0.36	0.26	0.075	0.1000	0.76	0.88	1.80	2.50
560	56	1	0.47	0.35	0.11		0.68	0.75	1.70	
680	68	1	0.52	0.38	0.12		0.61	0.69	1.50	
820	82	1	0.69	0.43	0.14		0.57	0.61	1.40	
101	100	1	0.79	0.61	0.16		0.50	0.60	1.30	
121	120	1	0.89	0.66	0.17		0.49	0.52	1.10	
151	150	1	1.27	0.88	0.23		0.43	0.46	1.00	
181	180	1	1.45	0.98	0.29		0.39	0.42	0.90	
221	220	1	1.65	1.17	0.40		0.35	0.36	0.80	
271	270	1	2.31	1.64	0.46		0.32	0.34	0.75	
331	330	1	2.62	1.86	0.51		0.28	0.32	0.68	
391	390	1	2.94	2.85	0.69		0.26	0.29	0.65	
471	470	1	4.18	3.01	0.77		0.24	0.26	0.58	
561	560	1	4.67	3.62	0.86		0.22	0.23	0.54	
681	680	1	5.73	4.63	1.20		0.19	0.22	0.48	
821	820	1	6.54	5.20	1.34		0.18	0.20	0.43	
102	1000	1	9.44	6.00	1.53		0.16	0.18	0.40	

◆ TOLERANCE OF INDUCTANCE

CRGB73/CRGB74/CRGB125 : 10~1000uH±20% (M).

CRGB127 : 1.2~7.6uH±40%/20% (N),10~47uH±20% (M).

◆ The operating temperature range is -25°C to +85 °C.

◆ IDC : The current of inductance drops 10%.